

VETERINARY EXCLUSIVE

# YUMOVE®

ADVANCE 360

for Dogs & Cats

## JUST ANOTHER JOINT SUPPLEMENT?

## THINK AGAIN.

### #1 CLINICALLY-PROVEN<sup>1</sup> FORMULA

We are the only canine joint supplement to be backed by **two *in vivo*, double-blind, placebo-controlled clinical studies**.<sup>1,2</sup>

### #2 EVIDENCE-BASED INGREDIENTS

What's inside matters. That's why we only add ingredients like our ActivEase® Green Lipped Mussels (GLM) that are **scientifically proven to have higher bioactivity levels** than other GLM powders.

### #3 BATCH GUARANTEED QUALITY

Our unique extraction process and rigorous testing (we sample every batch up to **8 times a day to analyze over 40 fatty acids**) allow us to deliver our clinically-proven<sup>1</sup> supplement every time.



**Our mission at YuMOVE® is to help pets across the world live their most active life, for life.**

- ✓ YuMOVE® ADVANCE 360 is our strongest-ever formula
- ✓ Clinically-proven to work in just 6 weeks<sup>1</sup>
- ✓ Based on 15 years of scientific research
- ✓ UK's number 1 joint supplement brand<sup>3</sup>
- ✓ YuMOVE® is currently helping more than 1.5 million dogs a year globally

**Recommend the only joint supplement backed by TWO tier one canine clinical studies to your clients today.**<sup>1,2</sup>





# #1 CLINICALLY-PROVEN<sup>1</sup> FORMULA

*These full formula clinical trials reflect our commitment to setting better standards within the supplement industry. Due to our ongoing research, we can say with confidence that YuMOVE<sup>®</sup> ADVANCE 360 works.<sup>1</sup>*

## Research Diligence

We partner with renowned researchers and respected institutes, such as the Clinical Investigations Centre at the Royal Veterinary College and Massey University, to ensure well-designed trials conducted to the highest standards.

Log in to our vet portal to view clinical summary & 3rd party ingredient studies



Known for its leading research of international quality, the Structure and Motion Research Centre of the Royal Veterinary College addresses key questions about how movement is controlled and what limits performance.



With their dedicated Working Dog Centre, Massey University draws expertise from renowned canine veterinarians to research and improve issues like joint health in active dogs.

## Visible Results in Just 6 Weeks

Our trials demonstrated statistically significant mobility benefits in both pet and working dogs given YuMOVE<sup>®</sup>, compared to the placebo groups,<sup>1,2</sup> with visible results in just 6 weeks.<sup>1</sup>

***We are the only joint supplement backed by two canine clinical studies.<sup>1,2</sup>***



*“The working dogs in New Zealand were a real test for YuMOVE<sup>®</sup> ADVANCE 360. These dogs are operating at the highest level, working in the toughest terrain – they are seriously impressive. As were the demonstrated benefits of YuMOVE<sup>®</sup> ADVANCE 360 in these beautiful animals.”*

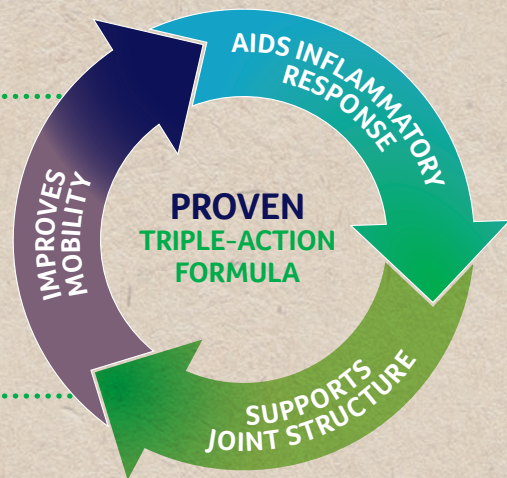
**Dr John Howie**  
CEO and Cofounder of Lintbells

Image credit: Vicky O'Conner



# #2 EVIDENCE-BASED INGREDIENTS

PROVEN & SUSTAINABLE INGREDIENTS



## Aids Inflammatory Response

### ACTIVEASE® GREEN LIPPED MUSSEL (GLM) CONCENTRATED OMEGA 3

- A natural source of Glycosaminoglycans (GAGs) and Omega 3 Fatty Acids, including Eicosatetraenoic Acid (ETA)
- Unique, scientifically proven Omega 3 profile providing higher bioactivity compared with other GLM powders
- Sustainably sourced from the crystal-clear waters of New Zealand, using only the top 2% of the world's supply

### CONCENTRATED FISH OIL – A RICH SOURCE OF EPA AND DHA

- Higher EPA and DHA bioavailability than other Omega 3 Fatty Acids
- Exceeds the Global Organization for EPA and DHA Omega 3 standards, including: low oxidation, high product quality, and a commitment to strong ethics
- Certified as dolphin-safe



## Improves Mobility

### HYALURONIC ACID (HA)

- Specific form and level of HA, proven to reach the joints in just 2 hours when taken orally
- Supports synovial function and maintains synovial fluid viscosity for lubrication and shock absorption

### VITAMINS C AND E

- Work synergistically with an antioxidant effect to neutralize free radicals

## Supports Joint Structure

### TWO FORMS OF GLUCOSAMINE AND CHONDROITIN

- Found in its natural form in our ActivEase® Green Lipped Mussels, Glucosamine HCl and N-Acetyl-D glucosamine (a direct precursor to HA) provides a synergistic effect when given with naturally occurring Chondroitin and helps preserve cartilage

### MANGANESE

- Supports collagen formation in cartilage, tendons, and ligaments, for joint strength



“As a pain expert and rehabilitation specialist, I am happy to add an evidence-based joint support tool to my toolbox.”

Robin Downing, DVM, MS, DAAPM, DACVSMR, CVPP, CCRP

The Downing Center for Animal Pain Management





# #3 BATCH GUARANTEED QUALITY



To ensure YuMOVE® ADVANCE 360 stays at a clinically-proven<sup>1</sup> quality, we sample every batch up to 8 times a day, analyzing over 40 fatty acids. We guarantee manufacturing processes are robust, precise, and constantly tested.

Our unique extraction process and rigorous testing allow us to deliver our clinically-proven<sup>1</sup> supplement, guaranteed in every batch, every time.

## Raising Standards

We are the ONLY manufacturer to produce GLM powder to such standards—higher standards than required by regulators.

We are proud to carry a Quality Seal from The National Animal Supplement Council. The NASC Quality Seal identifies products from companies that:

- ✓ Are committed to quality, vigilance, and continuous improvement
- ✓ Promote the well-being of companion animals and horses
- ✓ Regularly undergo manufacturing inspections
- ✓ Submit to random independent 3rd party product testing
- ✓ Produce products of a consistently high quality



**Veterinary exclusive hip and joint supplement**

**#1 CLINICALLY-PROVEN<sup>1</sup> FORMULA**   **#2 EVIDENCE-BASED INGREDIENTS**   **#3 BATCH GUARANTEED QUALITY**



Your clients will “*See the Difference*” in 60 days *guaranteed* or they receive 100% of their money back\*

Learn more by visiting our veterinary professionals' website at [yumoveadvance360.com](http://yumoveadvance360.com)

**Lintbells**  
Veterinary  
Manufacturer of YuMOVE®

\*For full terms & conditions, see [yumove.com/money-back](http://yumove.com/money-back).

References: 1. Study conducted by Royal Veterinary College. Data on file. 2. Massey University. Data on file. 3. Kynotec VetTrak, July 2021. Sales of YuMOVE® branded products through veterinary wholesalers. For further information, please contact: [info@yumoveadvance360.com](mailto:info@yumoveadvance360.com) or phone: 844-570-3222. [yumoveadvance360.com](http://yumoveadvance360.com). Lintbells, YuMOVE®, and ActivEase® are registered trademarks of Lintbells Limited. Copyright 2021. Establishment Registration No. GB154E0140.